

To view the complete list of support services for children and young people, visit the Blacktown City Council website under Services > Health and safety.

► **HEARING CLINIC - MT DRUITT**

Phone 1800 600 681

Mt Druitt Community Health staff work in partnership with schools, General Practitioners, hospitals, non-government agencies and other organisations to provide care at the Community Health Centre, in people's homes or in other venues, such as Early Childhood (Baby Health) Centres and Aged Day Centres. We also specialise in health promotion, prevention and early detection to assessment, treatment and continuing care.

► **YOUR SPEECH ROOM** **Phone** 0404 216 644

Your Speech Room offers specialised health services for children with speech, language, learning difficulties and autism.

► **CHATABOUT** **Phone** (02) 9831 0866

ChatAbout is a family-centered speech & occupational therapy practice lead by co-founder Leanne Johnston, also an experienced speech therapist. ChatAbout has a warm, friendly & experienced team of therapists who take great joy in their work while focusing on your child's individual needs.

Email: hello@chatabout.com.au

► **WORD BY WORD THERAPY**

Phone (02) 9621 6633

Our speech pathologists are available for speech therapy services within our clinic based in Seven Hills. We can provide both assessment and therapy within the clinic.

► **WESTERN SYDNEY SPEECH PATHOLOGY**

Phone (02) 9622 1616

Western Sydney Speech Pathology is a team of experienced and qualified Speech Pathologists who are enthusiastic and committed to improving communication skills in children.

► **CASTLE HILL SPEECH & OCCUPATIONAL THERAPY**

Phone (02) 9634 6839

Paediatric speech and OT practice. Offering services specific to learning difficulties, language delays, developmental disorders, autism spectrum disorders, autism diagnostic assessments.

Email: info@castlehillspeech.com.au

► **KIDSPRESS GROUP THERAPY**

Phone (02) 9831 0866

A children's mental health charity, KidsXpress helps to transform the lives of children impacted by adversity. We deliver trauma-informed Expressive Therapy to children under age 12yrs and Education Services for those that care for them.

By strengthening the emotional wellbeing of children and building the capacity of their caregivers, we're helping to create a future all children deserve.

► **EARLY ED** **Phone** (02) 9897 1511

Established over 40 years, all staff have expertise in child development and the needs of children and families in their early school years. Our key role is to provide early childhood intervention services including specific needs for children with delays in development.

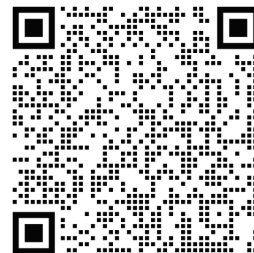
Our educators, speech pathologists, occupational therapists, physiotherapists, family support workers, behaviour specialists and program assistants have extra training and expertise in supporting children of all ages and with a full range of difficulties to be included in family life at home and in their community; including child care centres, pre-school, school, sport and play. We are active across a wide area of Sydney and through telehealth nationally.

Website www.earlyed.com.au/make-a-referral/

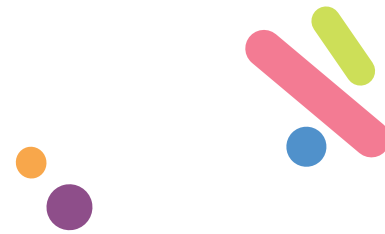
► **UNITING BURNSIDE HIPPIY BIDWELL**

Phone (02) 9831 0866

HIPPY is a two-year (45-week) home-based early childhood enrichment program focusing on preparing children for school. Home tutors visit families in their home every second week to show them how to do the activities. The parent and child then spend 10 to 15 minutes each day, five days a week, doing the activities together.



SCAN HERE



Available for residents of
Blacktown City Council

**COMMUNITY SUPPORT
SERVICES FOR FAMILIES**

**FURTHER INFORMATION,
LOCATIONS AND ENQUIRIES**

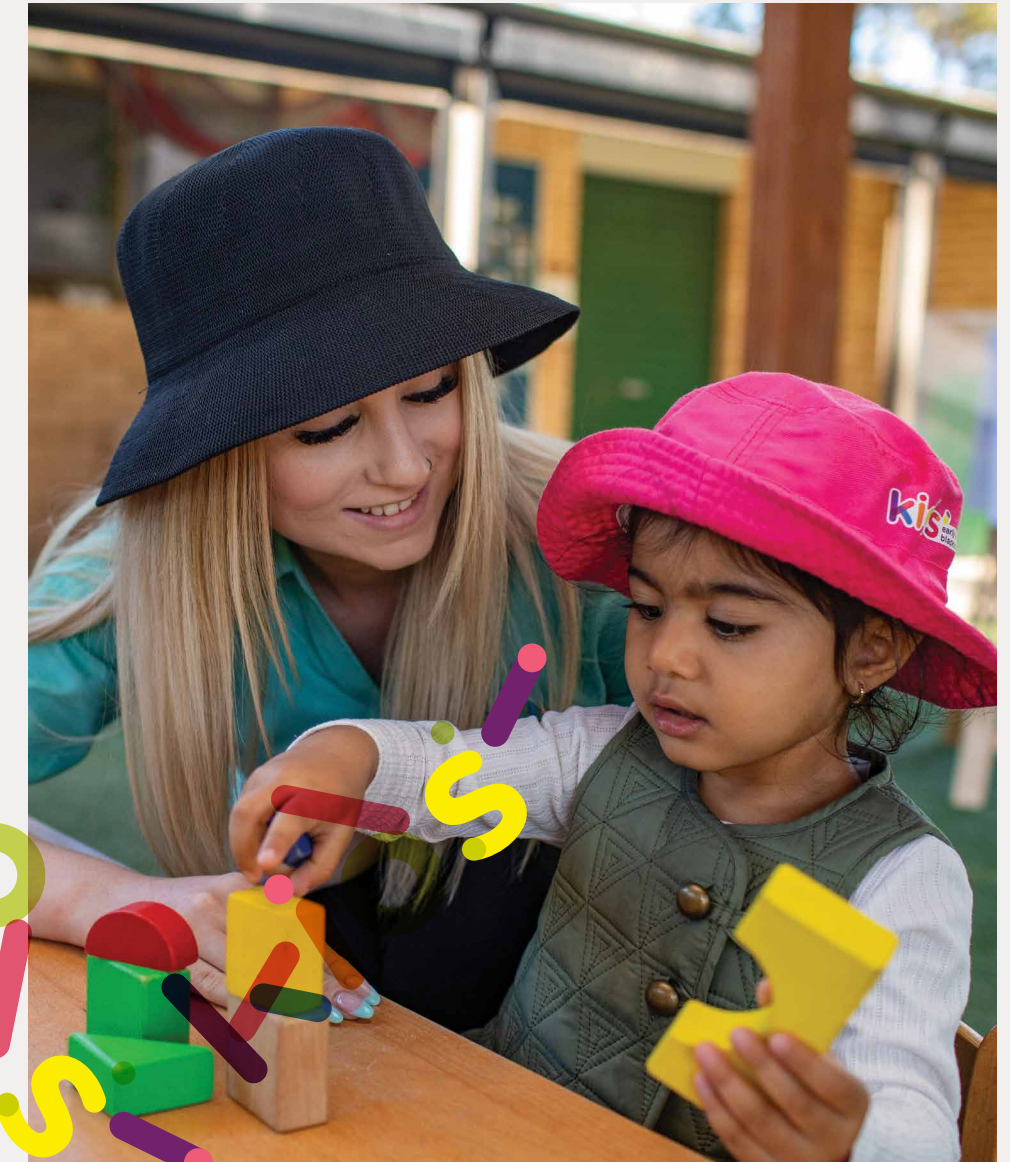
**MONDAY TO FRIDAY
8AM TO 5PM**

Kids' Early Learning Head Office
PO Box 63,
Blacktown NSW 2148

T 02 9839 6868

E kidsearlylearning@blacktown.nsw.gov.au
kidearlylearning.com.au

f Kids' Early Learning Blacktown City



Getting the right support when you need it doesn't have to be overwhelming.

▶ **LIFESTART** Phone 1800 436 436

Assisting families with children aged 0-24 years via group programs, online support, strong pathways (prior to early childhood education with the families at home), Offering therapy including speech, OT, Psychologist and social workers, Early Intervention, play groups and more.

Website www.lifestart.org.au

▶ **AUTISM COMMUNITY NETWORK**

Phone (02) 9621 6633

All of our programmes – from connecting people to informing and advocating for our community – are designed with one central goal: to support people with autism and their families. Whether directly, through social clubs or information sessions, or indirectly, through our work with educators, first responders, legislators and corporate partners, our goal is to help our members lead their best possible lives.

Email info@acnaustralia.org.au

▶ **SDN BERANGA** Phone (02)9831 0866

SDN Beranga is a purpose built preschool for children with autism located in Rooty Hill. It provides early childhood education for 27 children daily, and also offers early childhood intervention services and children's therapies.

Email: beranga@sdn.org.au

▶ **COMMUNITIES FOR CHILDREN - MT DRUITT**

Phone 1800 436 436

Mission Australia Communities for Children (CfC) is an early intervention and prevention program that aims to improve the development, health and wellbeing of children aged 12 and under by addressing local needs and encouraging community participation.

Website www.missionaustralia.com.au/contact-us

▶ **THE HIVE - MT DRUITT**

Phone (02) 9628 8262

Mt Druitt community led collaboration for the very best start for children 0-5 years. With connective early childhood focused programs and activities, The Hive support development vulnerabilities in a holistic way. Includes Health Linker, Check-ups Before School (CUBS), reading encouragement (The Imagination Library free books for children), Early Childhood Educators Network.

Email: hive@unitedway.com.au

▶ **JUNAYA FAMILY DEVELOPMENT SERVICES**

Phone (02) 9621 3922

Junaya Family Development Services is a community based organisation offering Targeted Early Intervention Services and support for families. It has developed a family friendly environment that ensure all individuals and families are treated with respect in an atmosphere that is non-judgmental, accepting, and valuing diversity.

Email info@junaya.org.au

▶ **NORTHCOTT** Phone (02) 9621 6633

As a NDIS early childhood partner, ECEI Coordinators can provide families with a safe space to talk through their questions or concerns. We provide information to allow families to make informed decisions and form connections with support available in their local community.

Email: ecei@northcott.com.au

▶ **GROWING EARLY MINDS** Phone 1800 660 212

A community based, not-for-profit organisation providing early intervention and disability support to children between 0-16 years. A registered NDIS and Medicare provider covering Western and North West Sydney. Families can visit in clinic or we can see children in everyday environments at home, child care centre or school. Clinics are also designed to provide telehealth services to families who reside in remote, regional or interstate locations – distance is no barrier. We're committed to supporting the potential of children, families and communities since 1994.

Email support@growingearlyminds.org.au

▶ **KEYS NETWORK** Phone (02) 8811 7145

The KEYS Network would like to work with community organisations to identify who can work alongside families as they access services through KEYS.

Email: admin@wskeys.com.au



▶ **GROWING EARLY MINDS**

Phone 1800 436 436

Provides early intervention and disability support to children between 0-16 years, and their families.

Address 2/217-219 Blacktown Rd, Blacktown NSW 2148

▶ **FAMILY AND COMMUNITY SERVICES**

Phone (02) 9831 0866

- Intensive family preservation
- Brighter futures (mental health, drug and alcohol abuse, domestic violence)
- Housing and rental assistance
- Family connect and support

Address 81 Flushcombe Rd, Blacktown NSW 2148

▶ **SYDWEST MULTICULTURAL SERVICES**

Phone (02) 9621 6633

- Women and family services
- Settlement services for new arrivals and refugees
- Housing services
- Aged care services
- Disability services

Address Level 2/125 Main St, Blacktown NSW 2148

▶ **TAFE NSW BLACKTOWN - ADULT MIGRANT ENGLISH PROGRAM (AMEP)**

Phone 1800 114 707

- Women and family services
- Settlement services for new arrivals and refugees
- Housing services
- Aged care services
- Disability services

Address Building G, Ground Floor Room G.G, Unit 19/154 Main St, Blacktown NSW 2148

Email support@growingearlyminds.org.au

▶ **CHILD AND FAMILY ALLIED HEALTH**

Phone 0439 322 466

If you're looking for assistance across a range of services for your child in one place.

- Speech pathology
- Occupational therapy
- Child and family counselling

▶ **CHILD PROTECTION COUNSELLING SERVICES**

Phone (02) 9881 8787

A specialist trauma focused counselling service for children, young people, families and carer's within the NSW child protection system. If you need counselling support after hours call 1800 737 732 (1800RESPECT)

▶ **CHILD ENRICHMENT AND DEVELOPMENT ASSOCIATION (CEADA)**

Phone (02) 9831 7001

Support for children who have developmental delays or disabilities. It aims to promote age-relevant growth and development during their early childhood years.

Address 36 Forge St, Blacktown NSW 2148

Email: ecei@northcott.com.au

▶ **ACT FOR KIDS INTEGRATED THERAPY SERVICE**

Phone (02) 9622 7636

Trauma informed therapy (psychology, speech pathology and occupational therapy for children.

Address 18/125 Main St, Blacktown NSW 2148

Email: blacktown@actforkids.com.au

▶ **WESLEY MISSION**

Phone (02) 8887 4800 or (02) 8887 4999

Wesley Mission reach all faces of Australia - from children, families and the elderly, to those struggling with homelessness, addiction, mental health, financial or domestic challenges.

Email: Level 2/125 Main St, Blacktown NSW 2148



Relationships Australia offers counselling, mediation and family dispute resolution. Call 1300 364 277 for further information. www.relationshipsnsw.org.au/support/services/

The Raising Children Network provides resources for parents, including helping children deal with separation.

Head to health provides a range of self help support tools, apps and resources. Covering topics like parenting skills, maintaining healthy families, and connecting with children.

The Kids Helpline offers free and confidential counselling to young people aged 5 to 25 on 1800 55 1800.

eheadspace provides free online and telephone support and counselling to young Australians aged 12 to 25, their families and friends.

Beyond Blue 1300 22 4636 has information for children and their parents at Healthy Families.

Lifeline www.lifeline.org.au 13 11 14

For children and young people who are experiencing or at risk of harm, please contact the Child Protection Helpline on 132 111.